

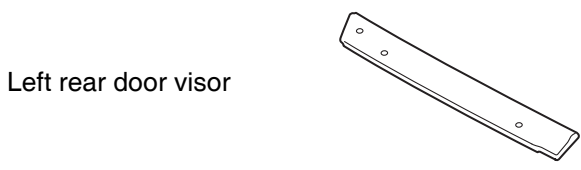
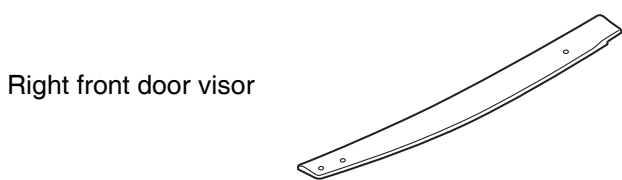
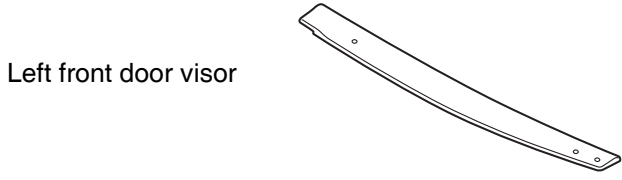
Accessory	Application	Publications No.
<b>DOOR VISORS</b> P/N 08R04-TK6-100A	<b>2012 FIT</b>	<b>All 45990</b>
		Issue Date
		<b>AUG 2011</b>

Accessory	Application	Publications No.
<b>DOOR VISORS</b> P/N 08R04-TK6-100A	<b>2012 FIT</b>	<b>All 45990</b>
		Issue Date
		<b>AUG 2011</b>

Accessory	Application	Publications No.
<b>DOOR VISORS</b> P/N 08R04-TK6-100A	<b>2012 FIT</b>	<b>All 45990</b>
		Issue Date
		<b>AUG 2011</b>

## PARTS LIST

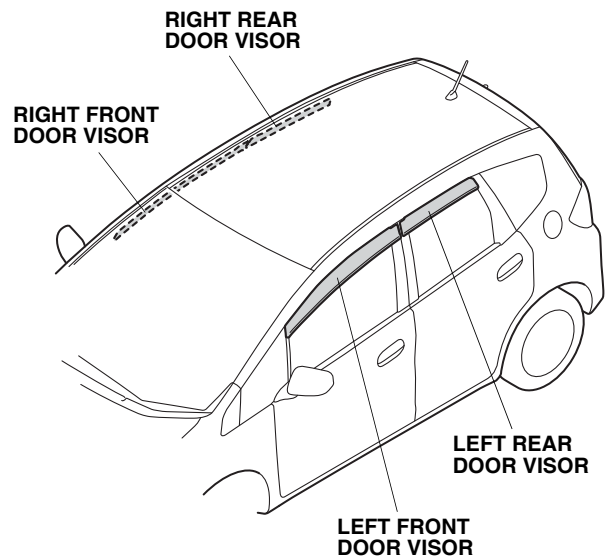
Door Visors cannot be installed on a vehicle equipped with the accessory B-pillar trim.



## TOOLS AND SUPPLIES REQUIRED

- Isopropyl alcohol
- Shop towel
- Ruler
- Masking tape

## Illustration of the Door Visors installed on the vehicle



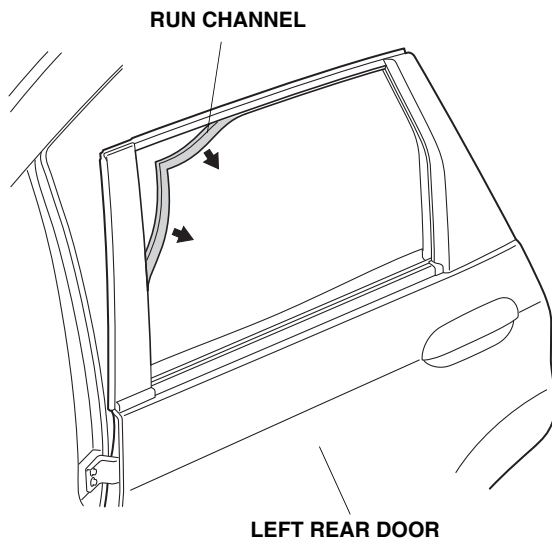
## INSTALLATION

### NOTE:

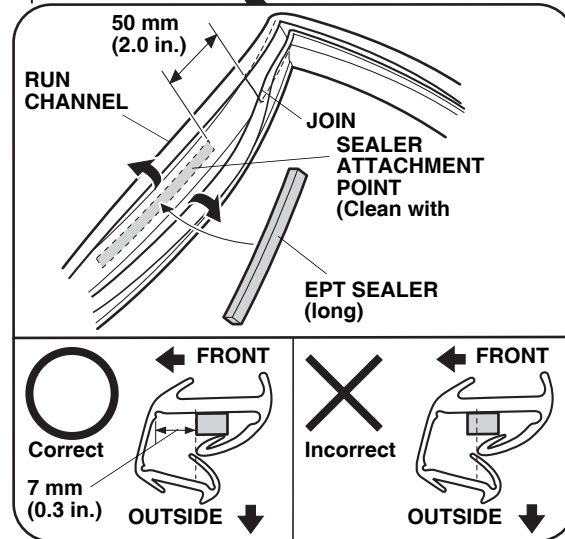
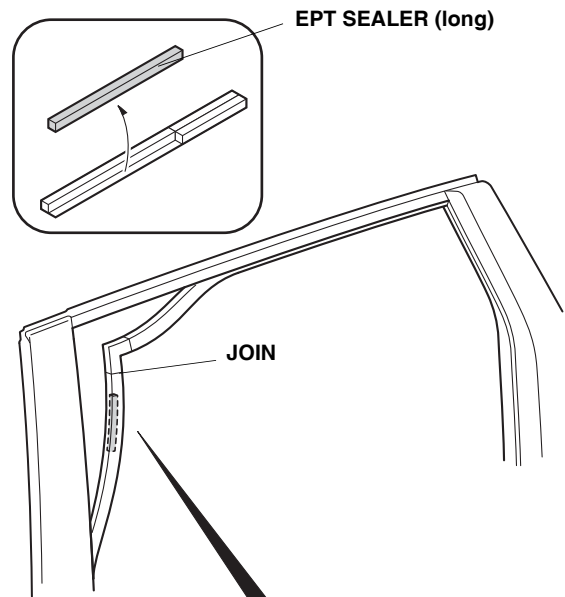
- Visors may not be legal in all states. Please check the laws of your state.
- These installation instructions show the left door visors being installed. The same procedure applies to installing the right door visors.
- Do not damage the paint finish or the run channels when installing the door visors.
- Handle the door visors with care. They are not designed to absorb shock or impact.
- Thoroughly clean the surfaces where the door visors attach using a shop towel dampened with isopropyl alcohol. Let the cleaned surface dry thoroughly before installation.
- This door visor kit should be installed only if the ambient air temperature is 15°C (60°F) or above.
- Align and install the door visors carefully. Trying to detach and reattach the visor can damage the part and/or ruin the adhesive so it no longer sticks properly.
- To allow the adhesive to cure, do not wash the vehicle for 24 hours. Please advise your customer.

### Installing the Rear Door Visor

1. Fully open the left rear window.
2. Pull out the upper corner of the run channel.

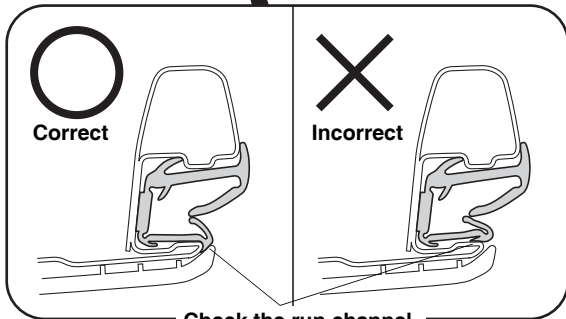
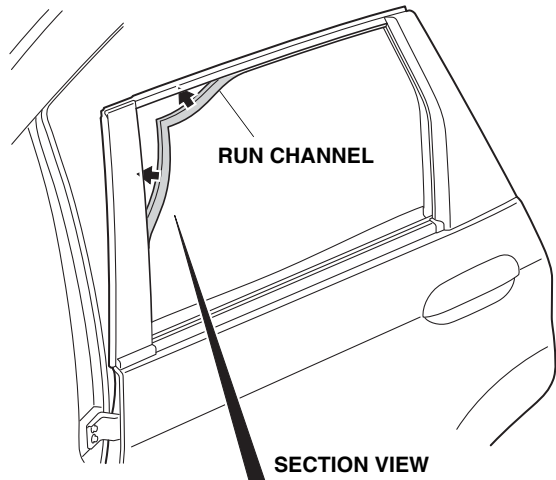


3. Open the run channel as shown, and measure where the EPT sealer (long) will attach.

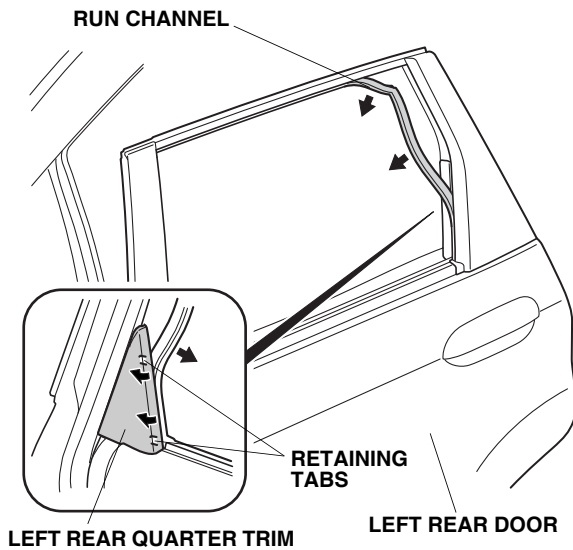


4. Using isopropyl alcohol, clean the area where the EPT sealer (long) will attach.
5. Remove an EPT sealer (long) from the adhesive backing, and attach it as shown. Make sure it is attached securely.

6. Reinstall the run channel. Make sure it is installed correctly.

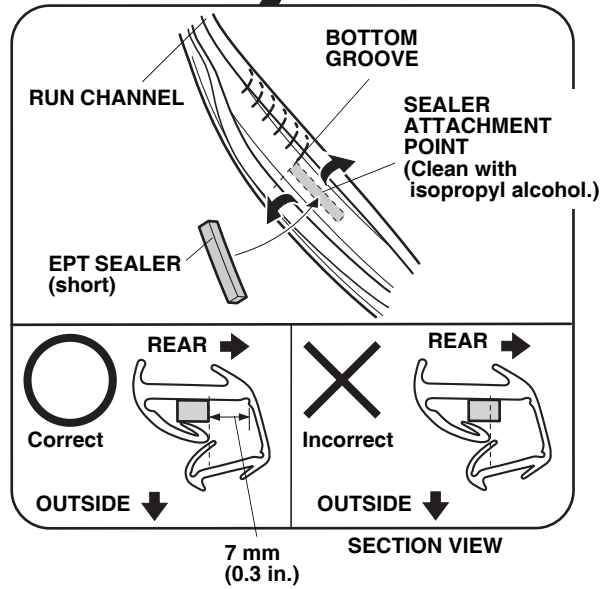
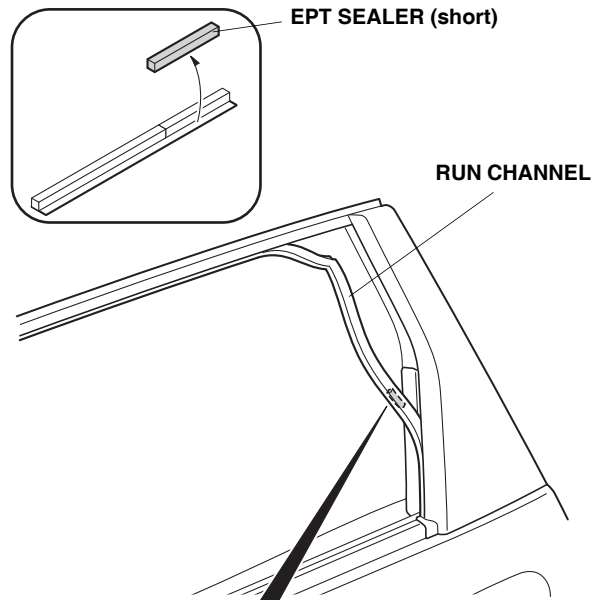


7. Slide the left rear quarter trim forward slightly to release the two retaining tabs. Do not try to remove the left rear quarter trim, the clip is easily damaged.



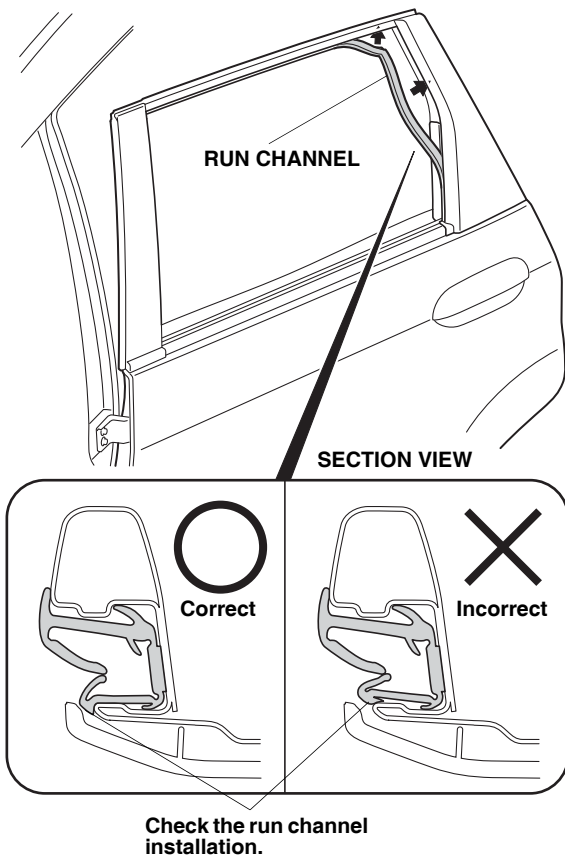
8. Pull out the rear corner of the run channel.

9. Using isopropyl alcohol, clean the area where the EPT sealer (short) will attach.

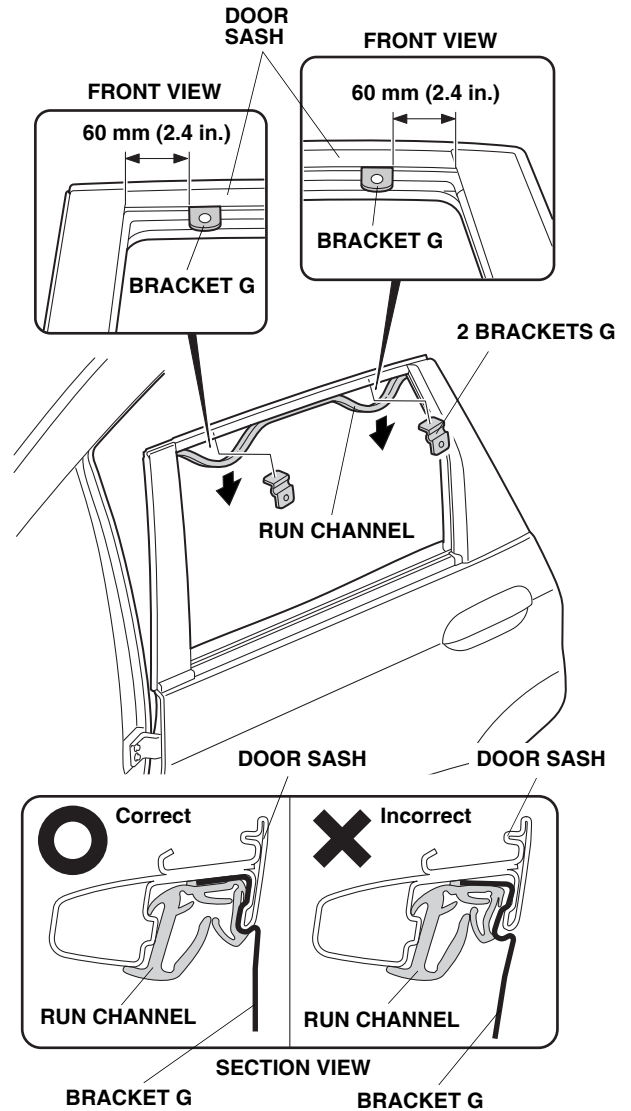


10. Remove an EPT sealer (short) from the adhesive backing, and attach it as shown. Make sure it is attached securely.

11. Reinstall the run channel and left rear quarter trim. Make sure the run channel is installed properly.

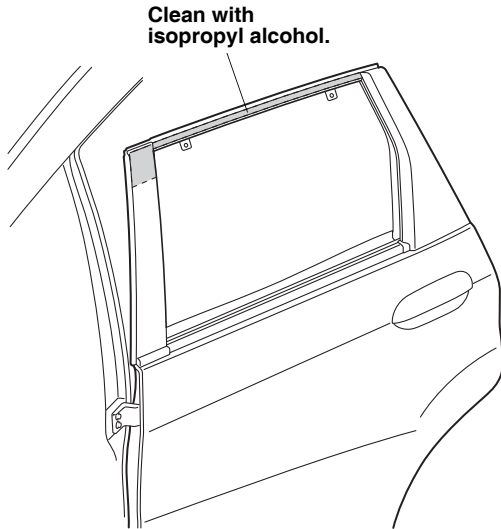


12. Pull down the run channel in the areas shown.

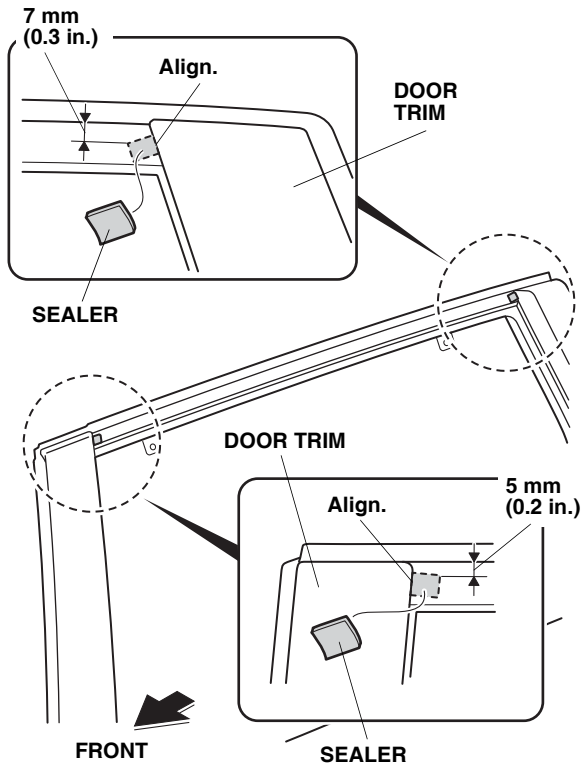


13. Install two brackets G to the door sash at the measurements shown.
14. Reinstall the run channel. Make sure the brackets G are installed correctly against the door sash as shown.

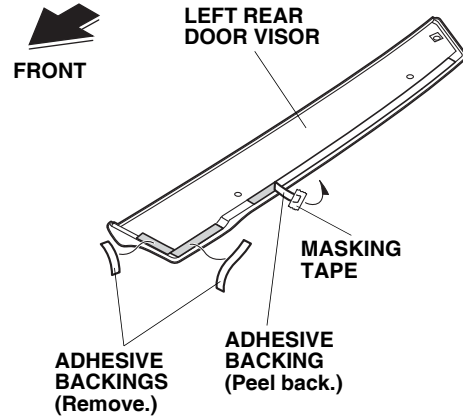
15. Using isopropyl alcohol, clean the door sash where the left rear door visor will attach.



16. Remove the adhesive backing from two sealers, and attach them to the left rear door as shown.

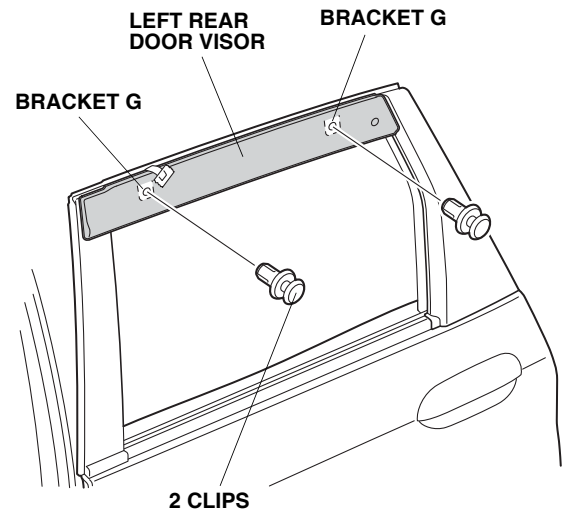


17. Peel back the adhesive backing partway and attach it to the outer surface of the left rear door visor with masking tape. Remove two adhesive backings.

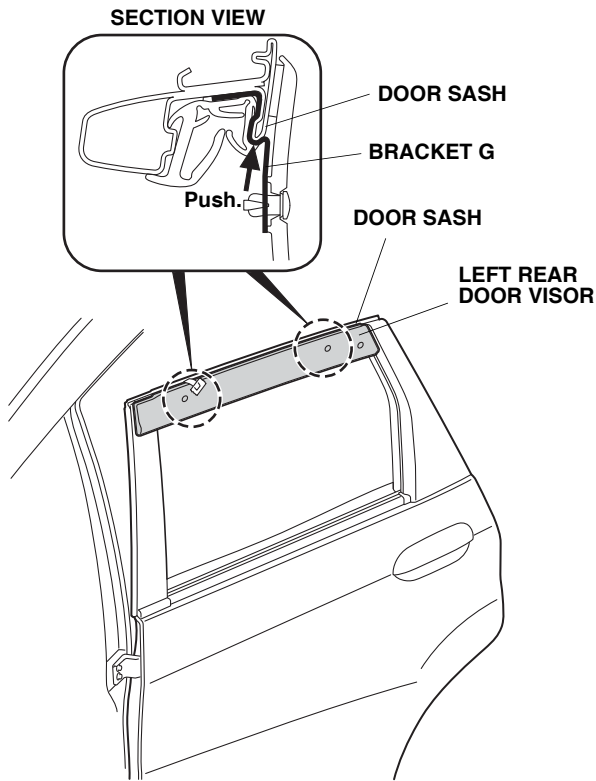


18. Secure the left rear door visor to two brackets G with two clips.

NOTE: Align the brackets and the door visor carefully before installing the clips. The clips cannot be removed and reinstalled.

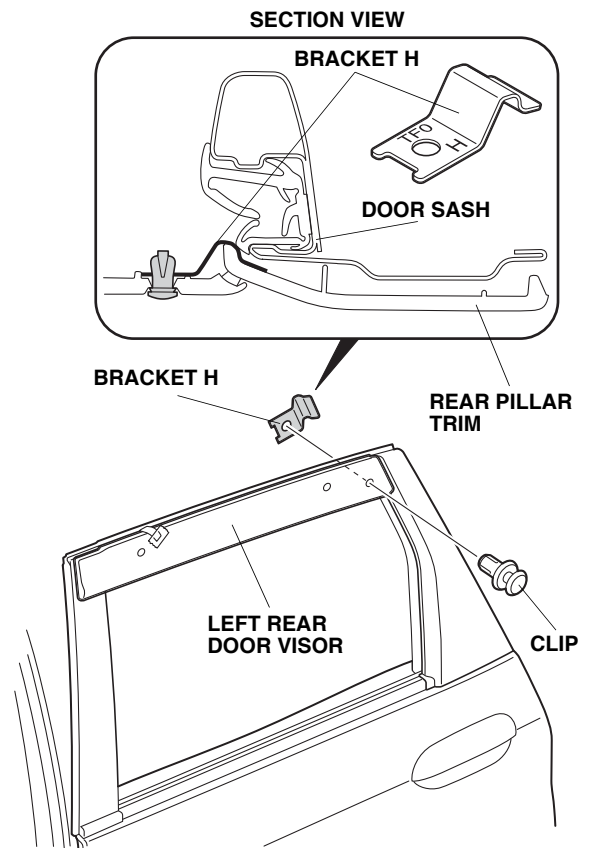


19. Push the left rear door visor upward, and check that it aligns with the contour of the door sash. Push the brackets firmly against the door sash so there is no gap between the clips and the sash.

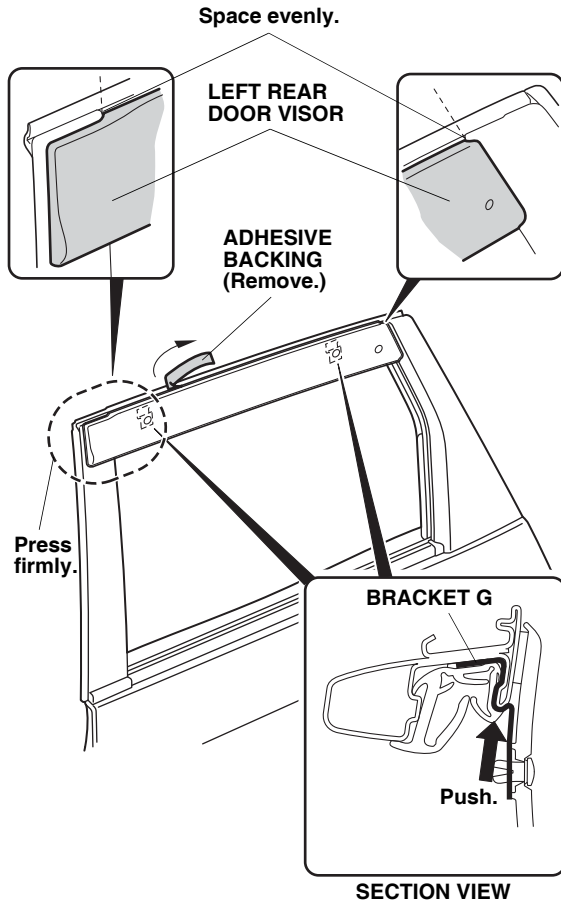


20. Insert a bracket H between the rear pillar trim and the door sash. Secure the left rear door visor to the bracket H with a clip.

NOTE: The clip cannot be removed and reinstalled.



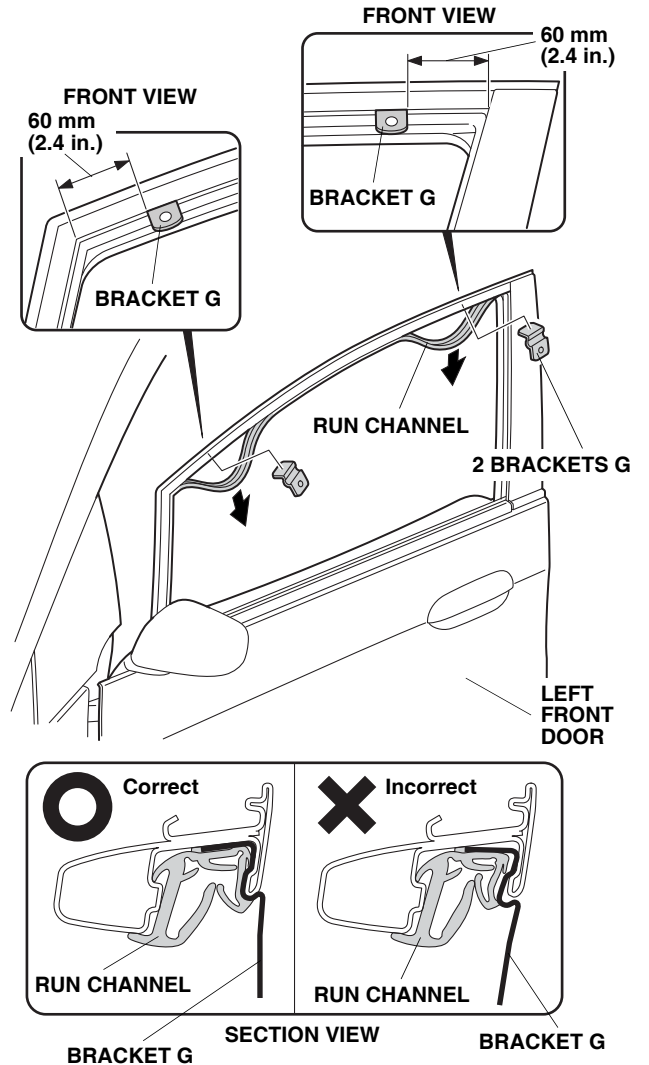
- Remove the adhesive backing while pressing the left rear door visor in the direction of the arrow so there is no gap between the brackets and the door sash.



- Press on the ends of the door visor for 30 seconds.

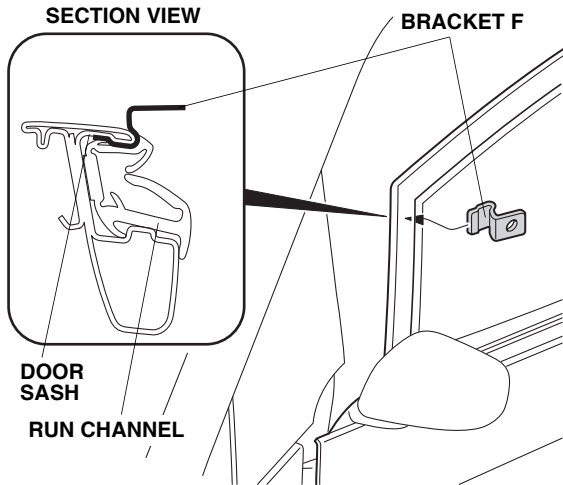
### Installing the Front Door Visor

- Fully open the left front window.
- Pull down the run channel in the areas shown.

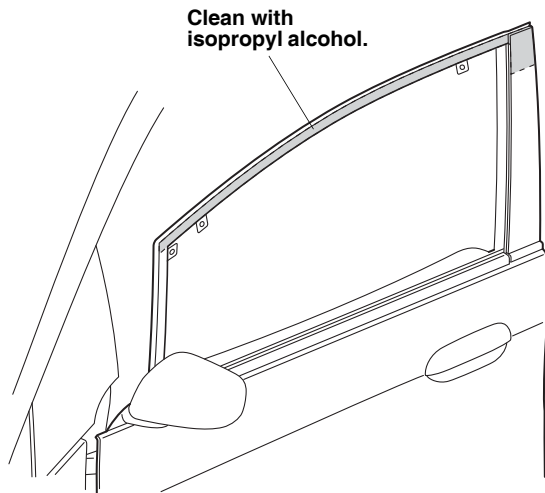


- Install two brackets G to the door sash at the measurements shown.
- Reinstall the run channel. Make sure the brackets G are installed correctly against the door sash as shown.

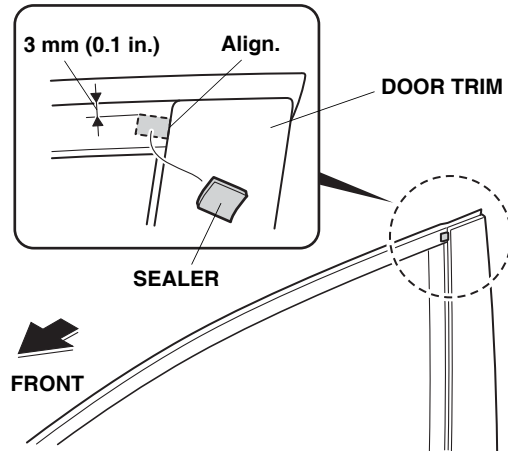
27. Install a bracket F between the door sash and the run channel in the position shown.



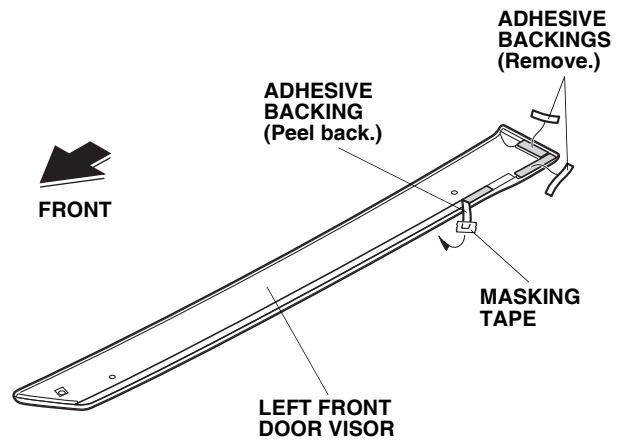
28. Using isopropyl alcohol, clean the door sash where the left front door visor will attach.



29. Remove the adhesive backing from a sealer, and attach it to the left front door as shown.



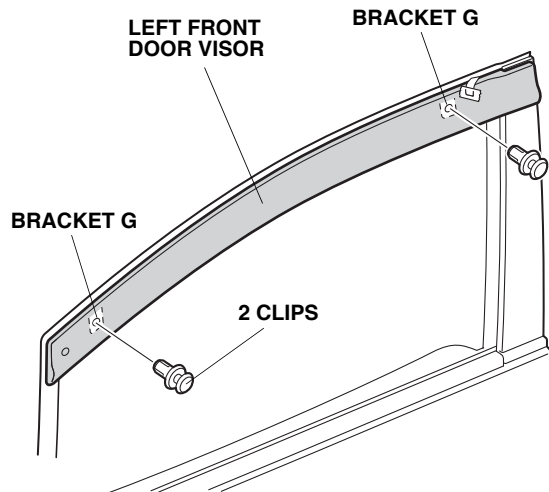
30. Peel back the adhesive backing partway and attach it to the outer surface of the left front door visor with masking tape. Remove two adhesive backings.



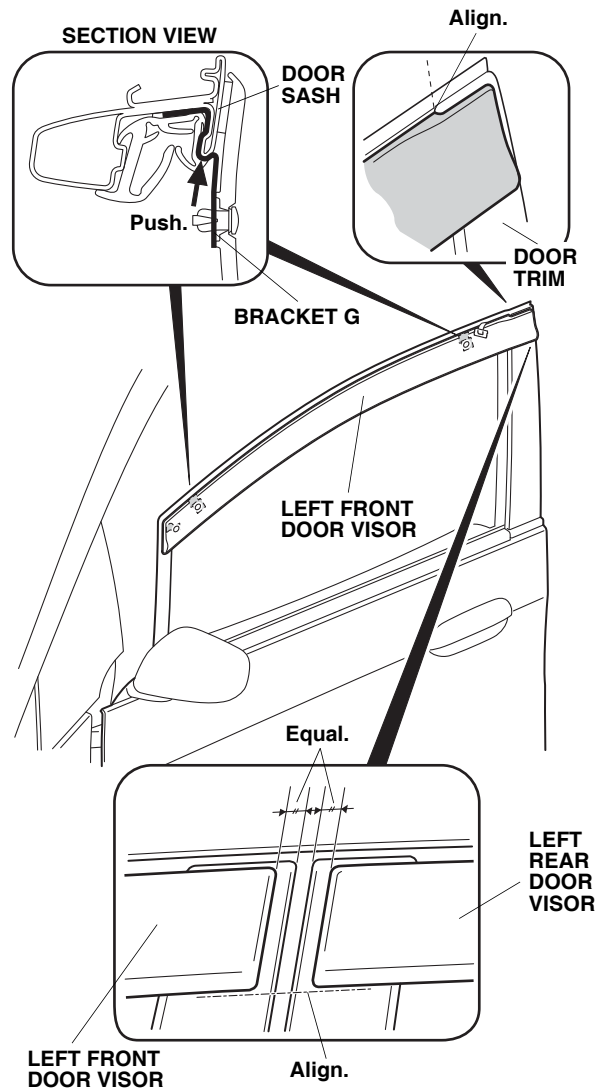


31. Secure the left front door visor to two brackets G with two clips.

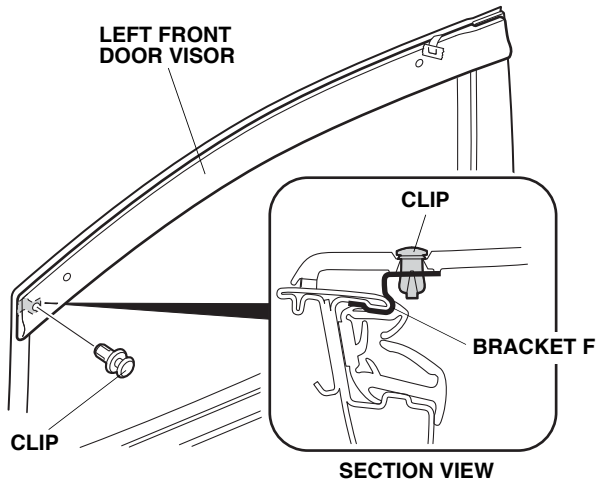
NOTE: Align the brackets and the door visor carefully before installing the clips. The clips cannot be removed and reinstalled.



32. Push the left front door visor upward, and check that it aligns with the contour of the door trim. Push the brackets firmly against the door sash so there is no gap between the clips and the sash.



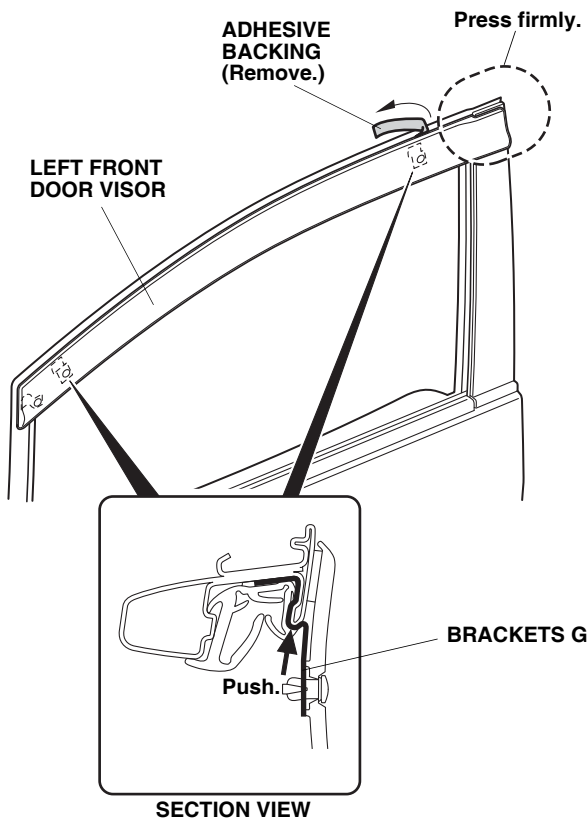
33. Move bracket F up or down to align it with the clip installation hole in the left front door visor.



34. Secure the left front door visor to the bracket F with a clip.

NOTE: The clip cannot be removed and reinstalled.

35. Remove the adhesive backing while pressing the left front door visor in the direction of the arrow so there is no gap between the brackets and the door sash.



36. Press on the ends of the door visor for 30 seconds.
37. Repeat steps 1 thru 36 on the right side of the vehicle.

### CONFIRMATION AFTER INSTALLATION

1. Start the engine.
2. Using the power window switch, fully close each window and check that there are no problems, such as a pinched run channel, etc.
3. Using the power window switch, repeat opening and closing of each window from fully closed to half-open 4 or 5 times to allow the run channels to fully seat. (While doing this, check for any problems with the window operation.)
4. Referring to the service manual for the vehicle, reset the power window control unit. (If the automatic closing/opening does not function after the reset, repeat the procedure.)

NOTE: This reset must be done to ensure that the anti-pinching function works properly.

### USE AND CARE

- When the door visors are dusty, clean them with a soft cloth dampened with water.
- If the door visors are very dirty, clean them with a neutral detergent and water. Do not use any volatile solvents (e.g. thinner, benzine, alcohol, etc.) or a cleaner containing abrasive material.