



# INSTALLATION INSTRUCTIONS

Accessory

**ARMREST WITH STORAGE COMPARTMENT**  
P/N 08U89-SCV-180

Application

**2006 ELEMENT**  
**(WITH A/T ONLY)**

Publications No.

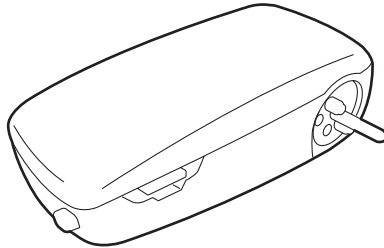
**All 31034**

Issue Date

**OCT 2005**

## PARTS LIST

Armrest box



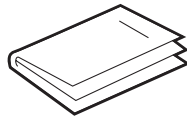
Base



2 Socket bolts



Owner's manual



## TOOLS AND SUPPLIES REQUIRED

Ratchet

10 mm and 17 mm Sockets

5 mm Hex wrench

Torque wrench

Utility knife

Tape measure

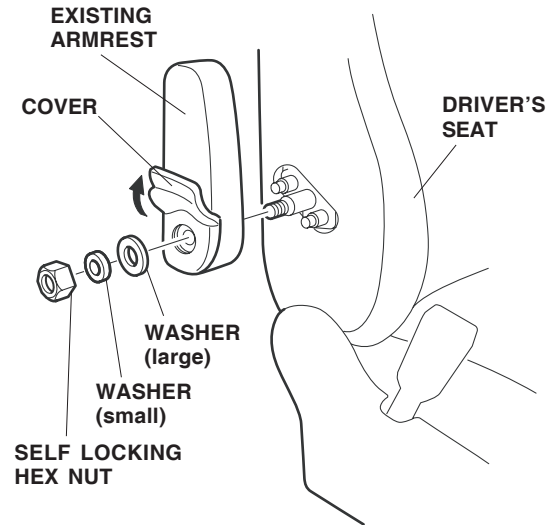
Felt-tip pen

## INSTALLATION

**NOTE:** Be careful not to damage the seat-back when installing the armrest with storage compartment.

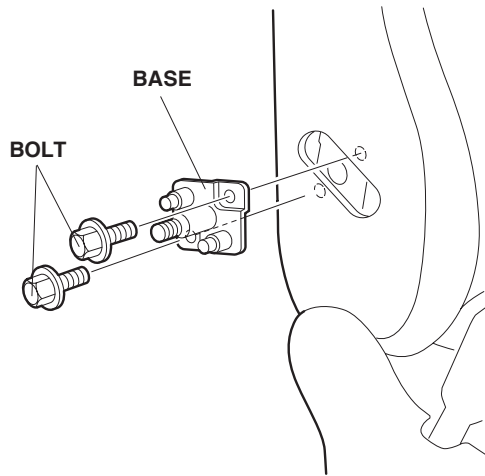
*If the vehicle is equipped with an armrest, continue with step 1, otherwise go to step 5.*

1. Zip open the existing armrest cover on the driver's seat, and pull back the cover as shown.

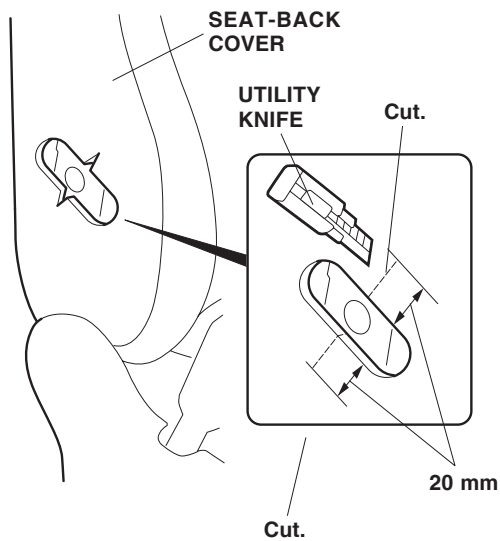


2. Remove the hex nut, small washer, and large washer that secures the existing armrest, and remove the armrest.

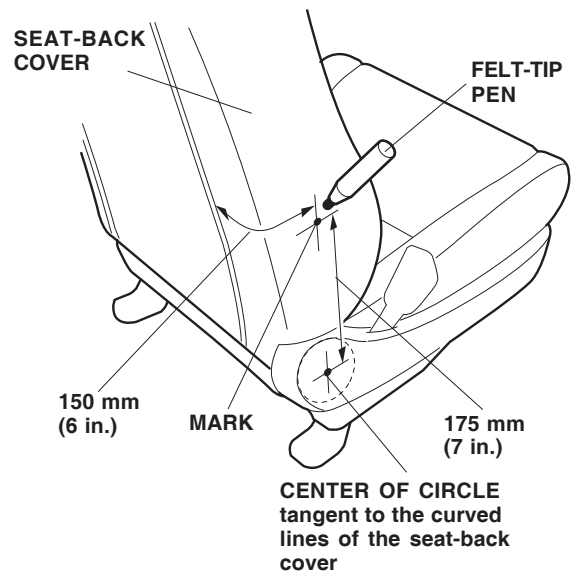
- Remove the base (two bolts). Set the armrest and the base with bolts aside; they will not be reused.



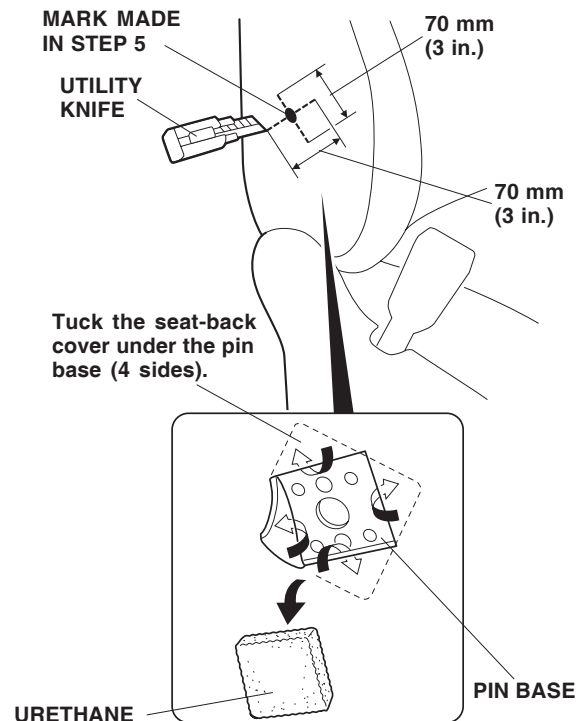
- Using a tape measure and a felt-tip pen, measure and mark the seat-back cover in the area shown. Cut out the marked area on the seat-back cover with a utility knife, then go to step 7.



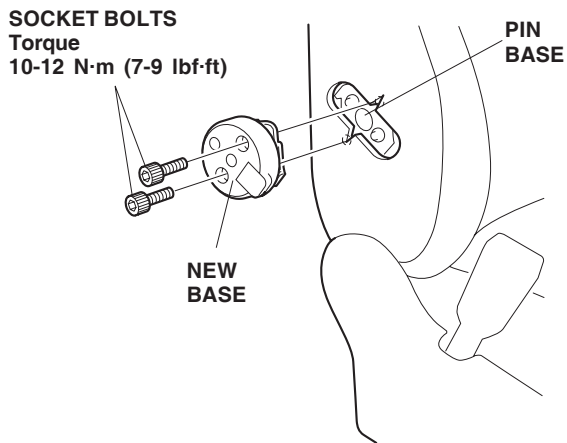
- Using a felt-tip pen and tape measure, measure and mark the seat-back cover as shown. Push in on the mark, and confirm that the mark is centered over the hole in the seat base.



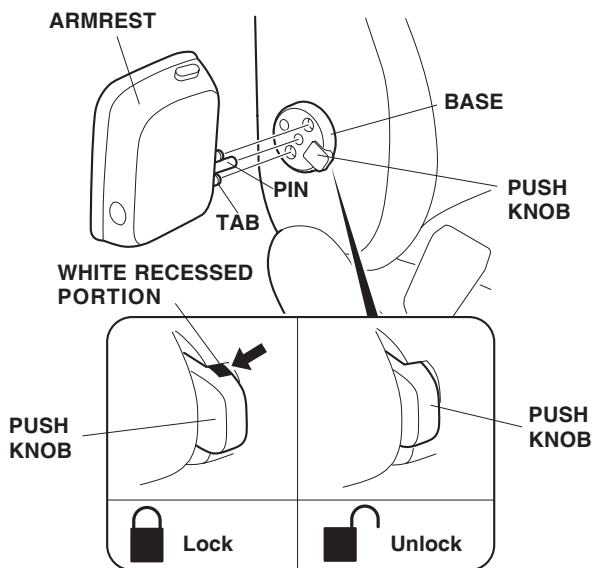
- Using a utility knife, make two 70 mm (3 in.) cuts in the seat-back cover. Using these 70 mm (3 in.) cuts as a guide, cut out the seat urethane to expose the seat base.



7. Get the new base from the kit, and position it on the seat's pin base. Install the two socket bolts. Torque the socket bolts to 10-12 N·m (7-9 lbf·ft).



8. Insert the armrest into the holes in the base and push on it until it clicks into position. The white recessed portion of the push knob should be visible.



9. Check that the armrest operates properly by moving it up and down with your hand.
10. To release the armrest, press on the push knob and pull out on the armrest.
11. Put the armrest owner's manual in the glove box.