



# INSTALLATION INSTRUCTIONS

Accessory

CIGARETTE LIGHTER  
P/N 08U96-S9A-100

Application

2004 CR-V

Publications No.

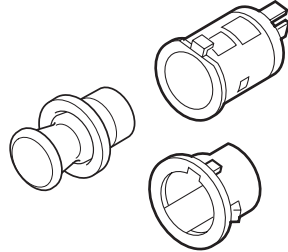
All 26119

Issue Date

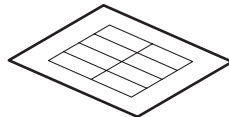
SEP 2003

## PARTS LIST

Cigarette lighter



Fuse label



## TOOLS AND SUPPLIES REQUIRED

#2 Phillips screwdriver

Shop towel

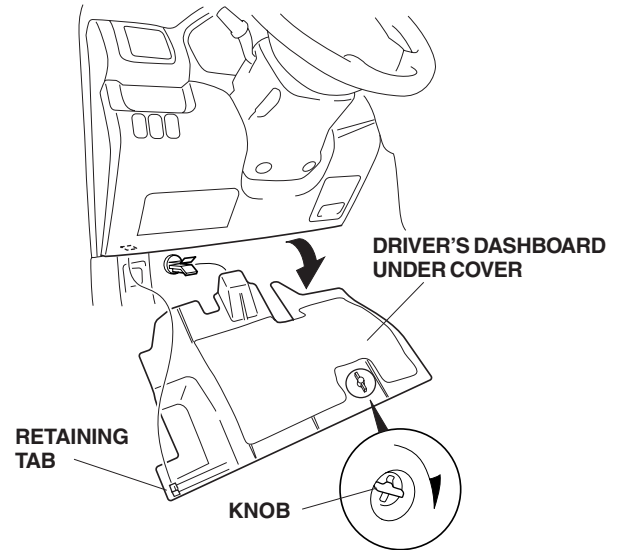
Small flat-tip screwdriver

## INSTALLATION

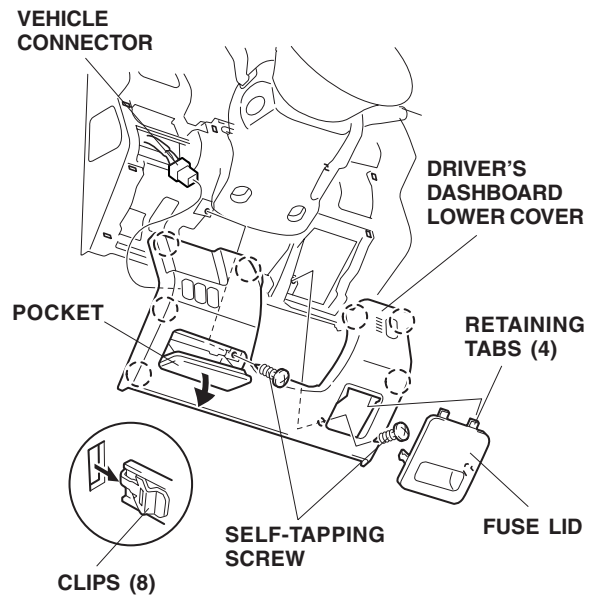
**Customer Information:** The information in this installation instruction is intended for use only by skilled technicians who have the proper tools, equipment, and training to correctly and safely add equipment to your vehicle. These procedures should not be attempted by "do-it-yourselfers."

1. Make sure you have the anti-theft code for the radio, then write down the radio station presets.
2. Disconnect the negative cable from the battery.

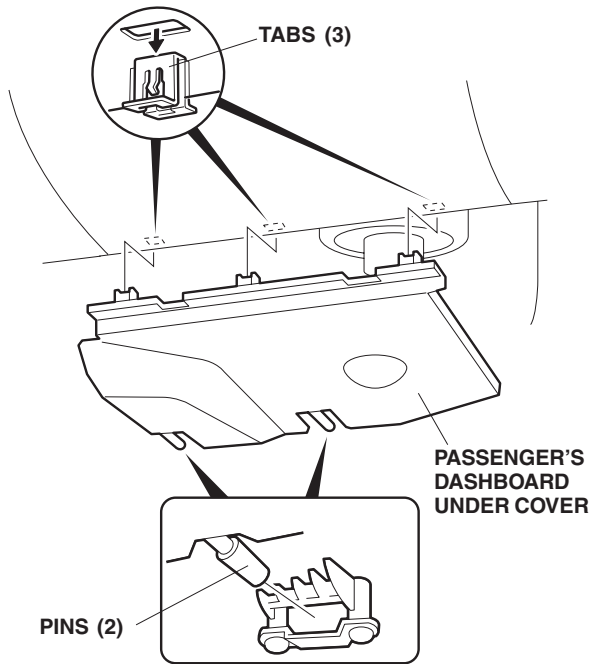
3. Turn the knob clockwise, release the one retaining tab, and remove the driver's dashboard under cover.



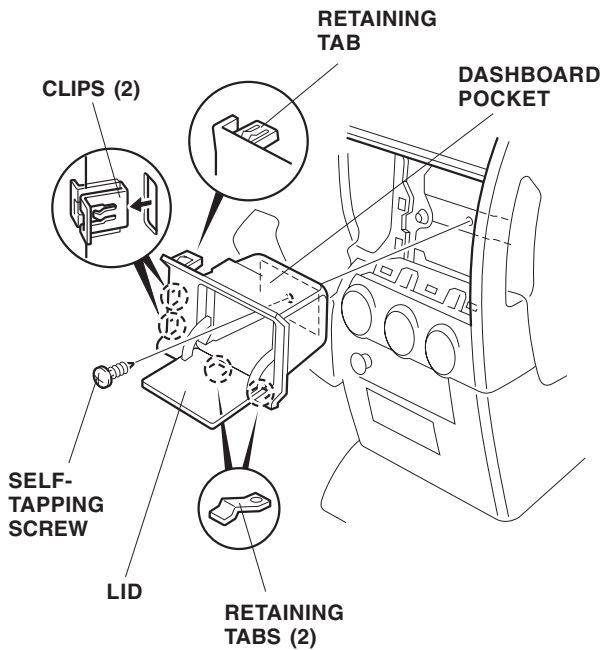
4. Remove the driver's dashboard lower cover:
  - Remove the fuse lid (four retaining tabs), and open the pocket.
  - Remove the two self-tapping screws.
  - Gently pull out on the driver's dashboard lower cover to release the eight clips, unplug the vehicle connector, and remove the lower cover.



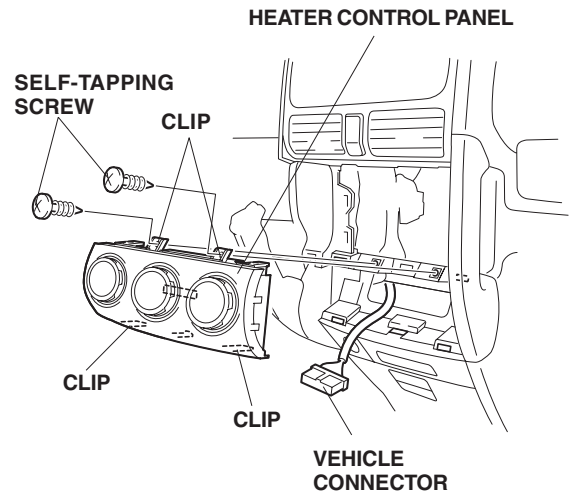
- Remove the passenger's dashboard under cover (release the three retaining tabs and two pins).



- Open the lid. Remove the dashboard pocket (one self-tapping screw, and pull out to release the two clips and three retaining tabs).



- Remove the two self-tapping screws that fasten the heater control panel to the instrument panel.

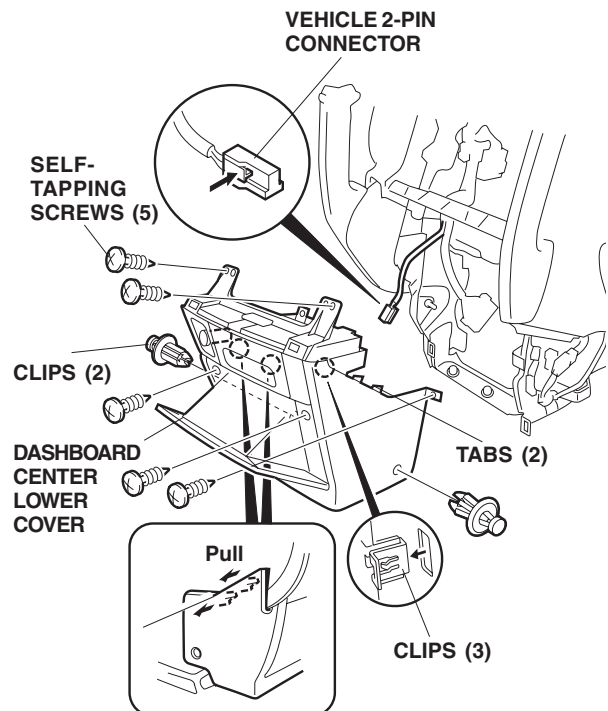


- Pull the heater control panel out toward you to release the four clips. Unplug the vehicle connector, and remove the heater control panel.

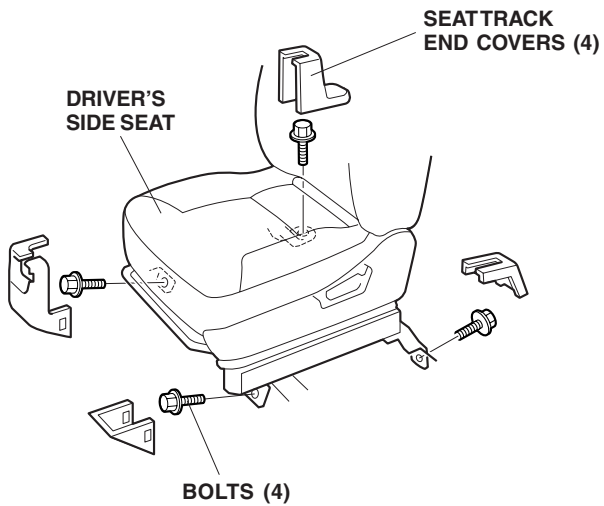
- Remove the dashboard center lower cover.

- Remove the two clips and five self-tapping screws, and pull the cover out toward you to release the three clips and two tabs.
- Unplug the vehicle 2-pin connector from the accessory socket and remove the cover.

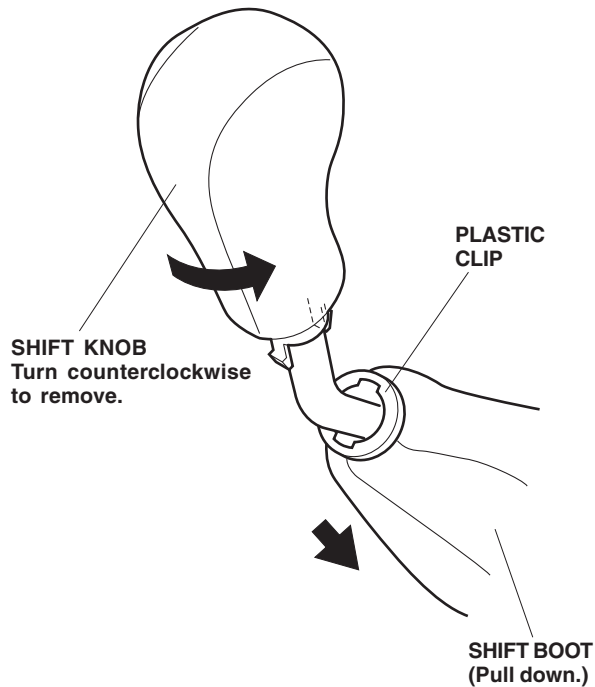
**A/T Model:**



**M/T Model:** Remove the four seat track end covers from the driver's seat, then remove the four bolts that secure the seat.

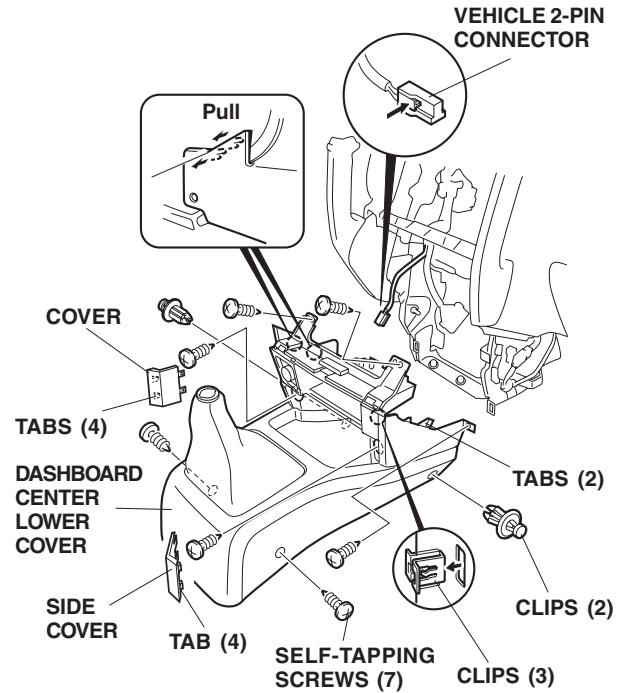


- Pull the shift boot, down while holding the plastic clip.



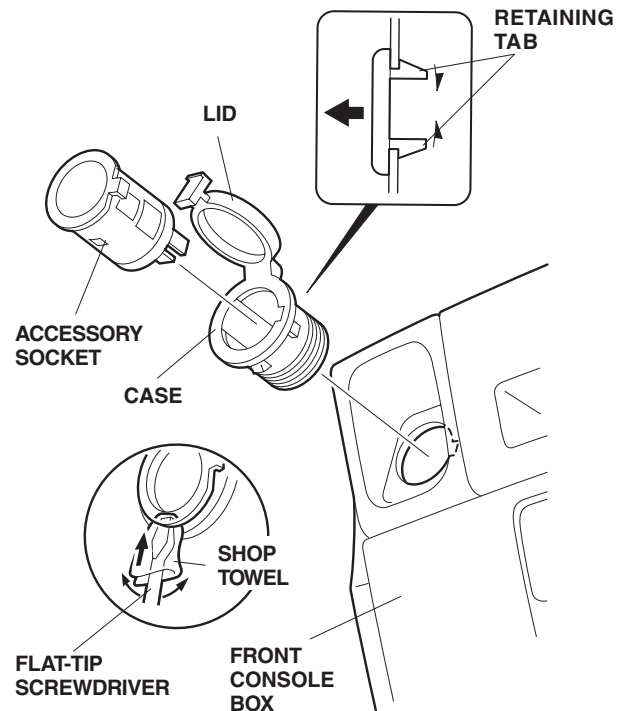
- Remove the shift knob from the shift lever by turning it counterclockwise.

- Remove both side covers (four tabs).

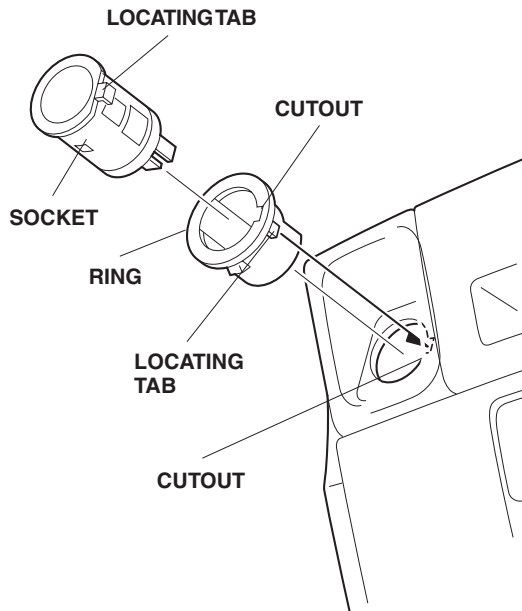


- Remove the two clips and seven self-tapping screws and pull the cover out toward you to release three clips and two tabs. Unplug the 2-pin connector from the accessory socket, and remove the front console.

10. Open the lid on the accessory socket. Using a shop towel around a flat-tip screwdriver, gently pry on the socket, and remove the case.

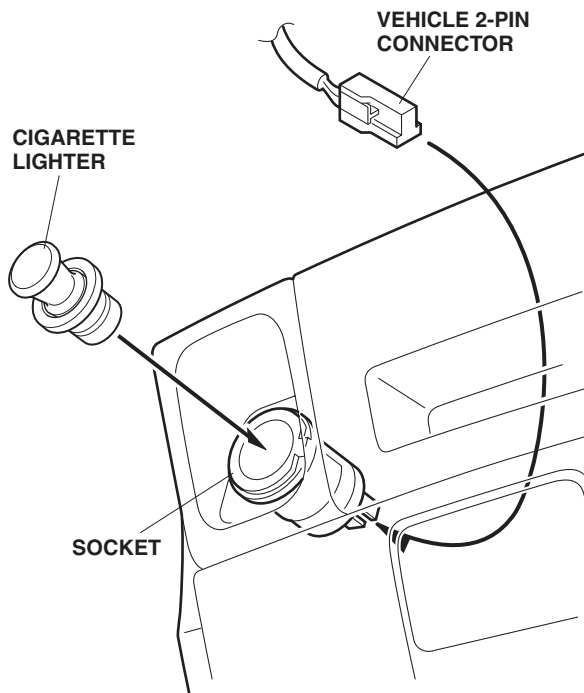


11. Slide the ring into the hole in the cover box.



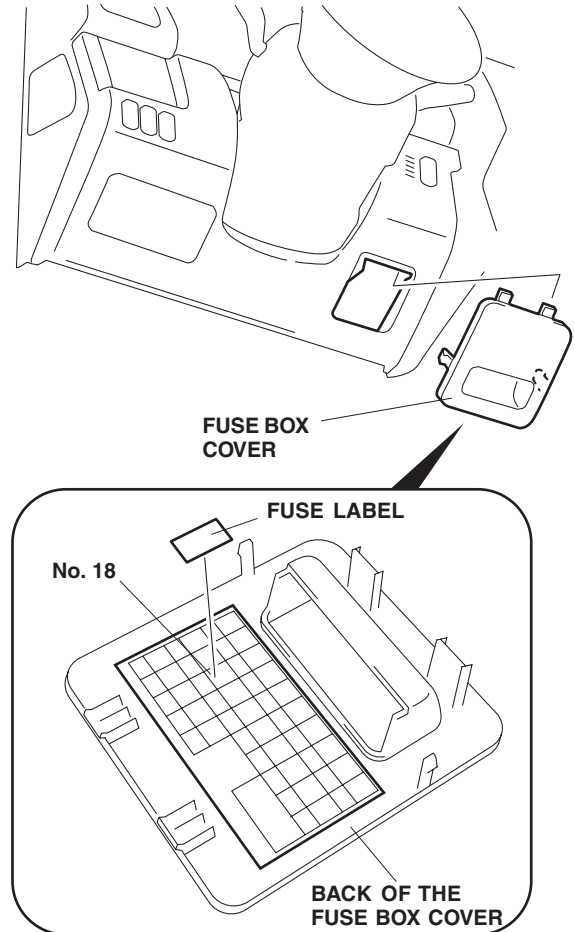
12. Align the socket locating tab with the cutout in the ring, and slide the cigarette lighter socket into the ring.

13. Connect the vehicle 2-pin connector to the cigarette lighter socket assembly.



14. Reinstall the cigarette lighter into the socket.

15. Attach the cigarette lighter fuse label (15A) over the No. 18 spot on the back of the fuse box cover.



16. Reinstall the dashboard center lower cover, and push the cigarette lighter into the socket.

17. Reinstall all removed parts. Be sure that all retaining clips and tabs are securely fastened.

18. Check that all connectors are plugged in.

19. Reconnect the negative cable to the battery.

20. Reset the clock and the radio station presets.

21. Test the cigarette lighter.

NOTE: Whenever the battery is disconnected, the driver's window AUTO function is disabled.

22. Start the engine. Push down on the driver's window switch until the window is fully open.

23. Pull up on the driver's window switch to close the window completely, then hold the switch for 2 seconds or more.

24. Test the window AUTO function.

25. Do the ECM/PCM idle learn procedure.

- Make sure all electrical items are turned off.
- Start the engine. Hold the engine speed at 3,000 rpm with no load (in Park or Neutral) until the radiator fan comes on.
- Let the engine idle for about 5 minutes with the throttle fully closed and with all electrical items off.

NOTE: If the radiator fan comes on during this step, the time it operates must not be included in the 5 minutes.